

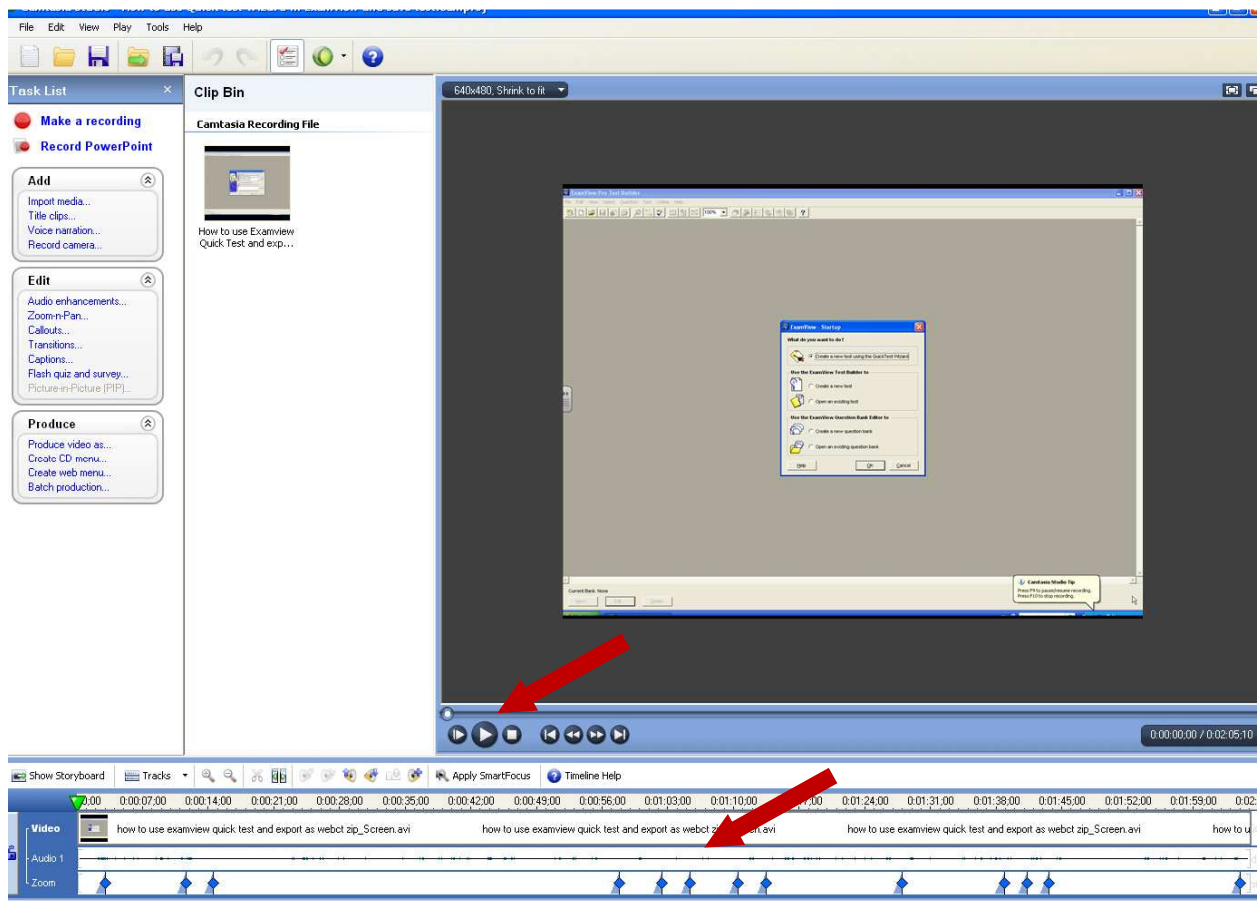


CIE

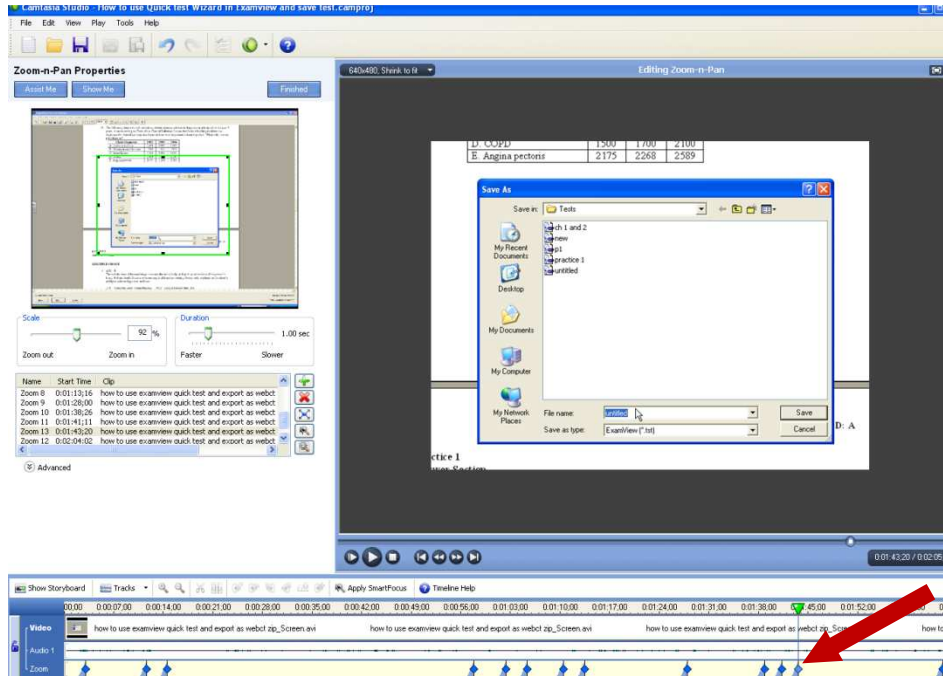
The Center for Instructional Excellence

## EDIT ZOOM AND PAN (CAMTASIA'S SMART FOCUS)

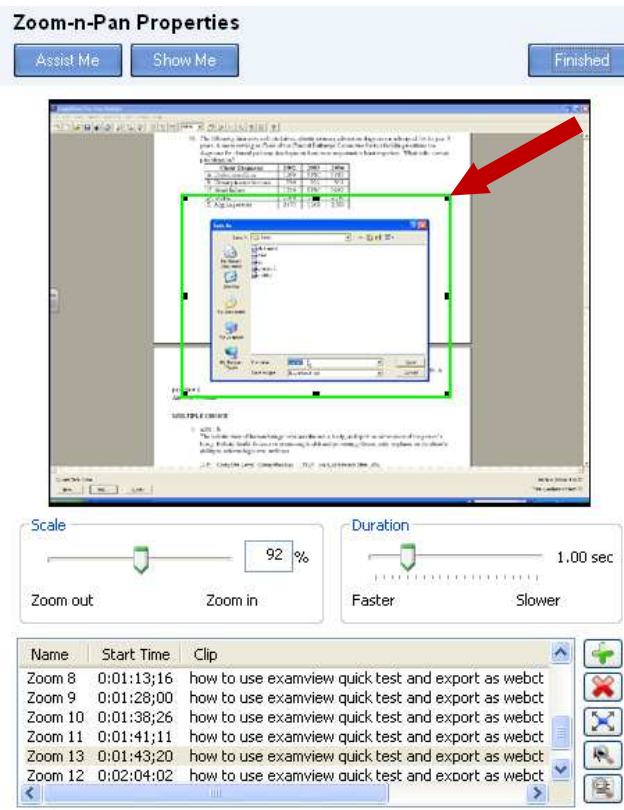
1. Open Camtasia if not already
2. Open Project
  - a. Note: if you just recorded and went directly to edit, you are here
3. The diamond shapes on the bottom row appear when smartfocus is applied
4. Make note as you are watching real time, or click on each one to be sure you like the way it zoomed.



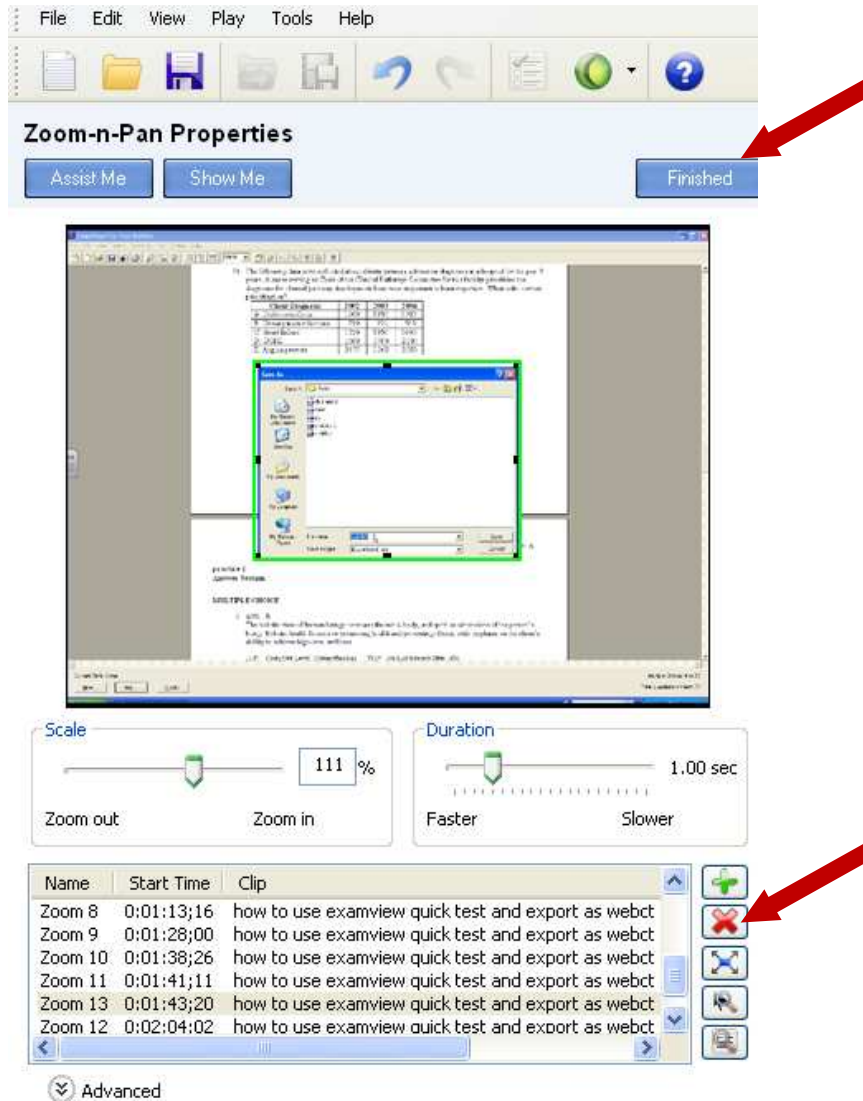
- If there is a zoom that you are very unhappy with, place your cursor over and double click
- The “zoom and pan” will appear at right



- Use the mouse to adjust the zoom box size



- 8. Click <Finished>
- 9. You can also remove a zoom marker from here



- 10. Corrected zoom and pan will be in video. Don't forget to save.