

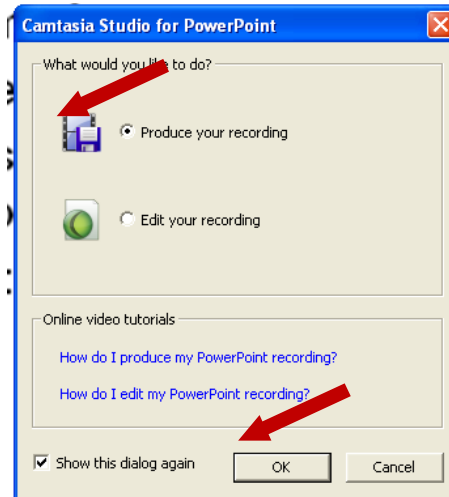


CIE

The Center for Instructional Excellence

## DIRECTLY PRODUCE WITHOUT GOING TO EDIT MODE

1. After capturing a PowerPoint, the following appears
  - a. Choose Produce your recording
  - b. Click <OK>



## Render Video

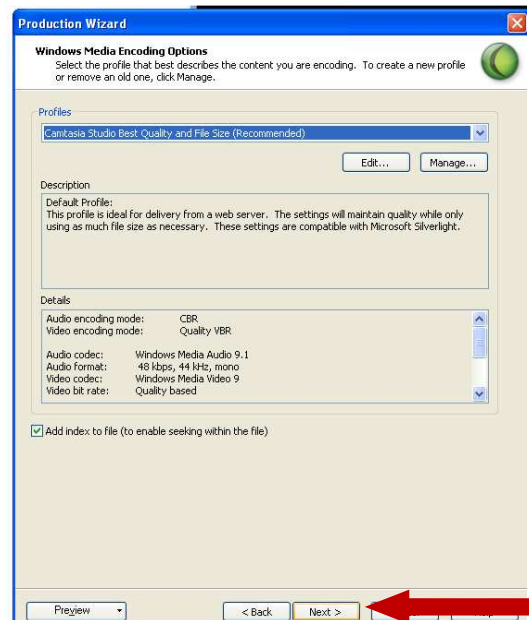
1. Choose Custom Production settings
2. Click <Next>



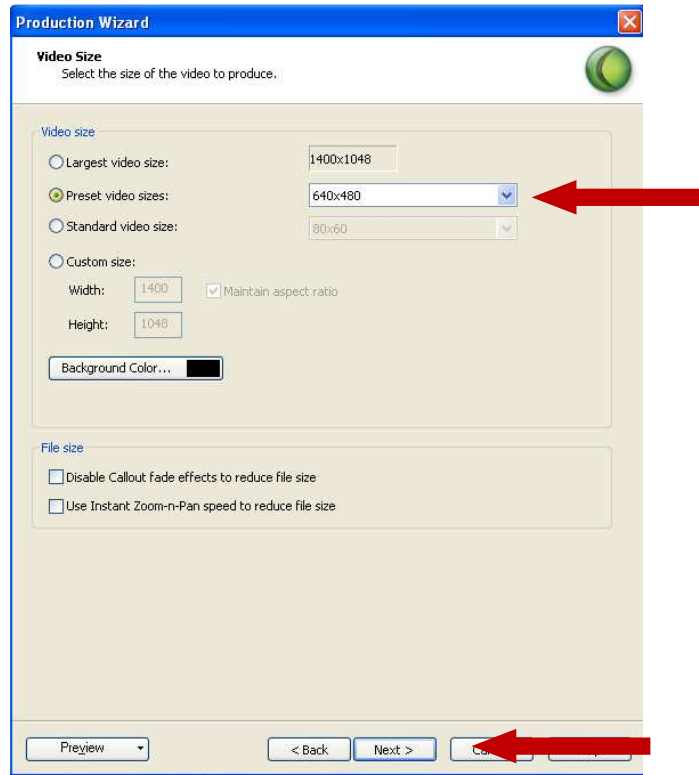
3. Choose WMV; Click <Next>.



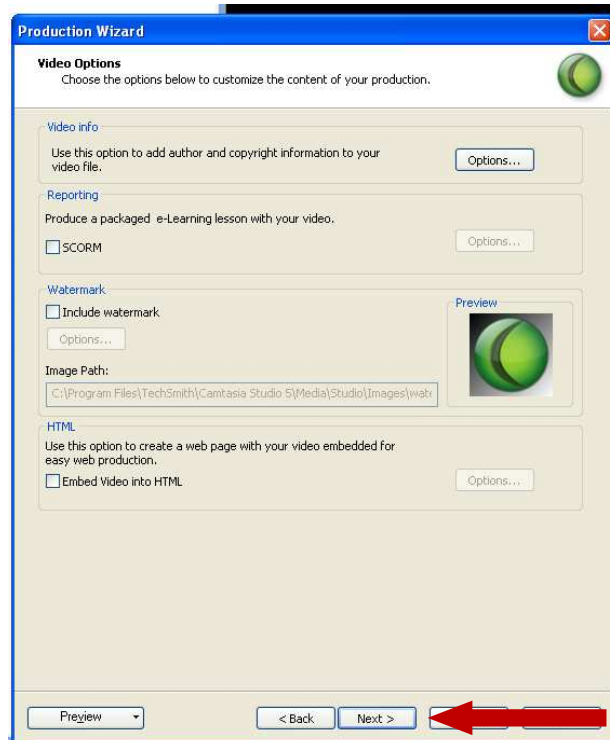
4. Click <Next>



5. Click Preset Video size 640 X 480
6. Click <Next>



7. Click <Next>



8. Click <Next> again and when Video is through rendering, the following will appear.
9. Click < Finish>

