

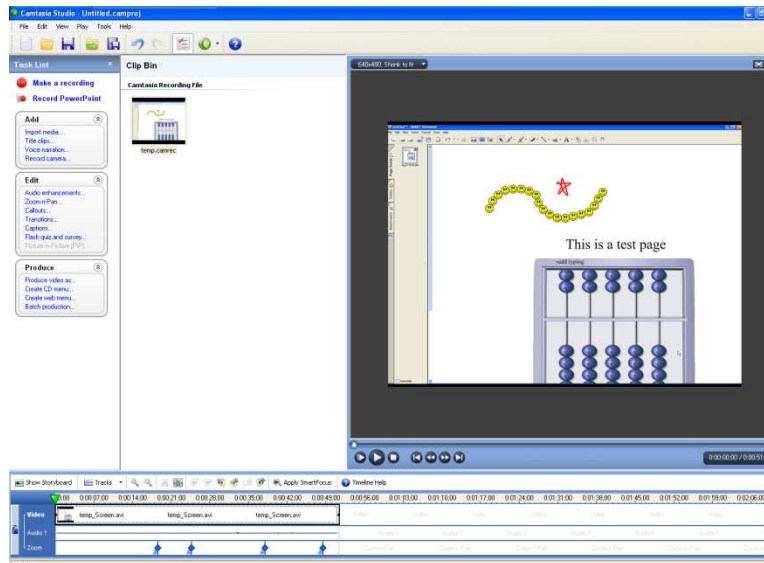


CIE

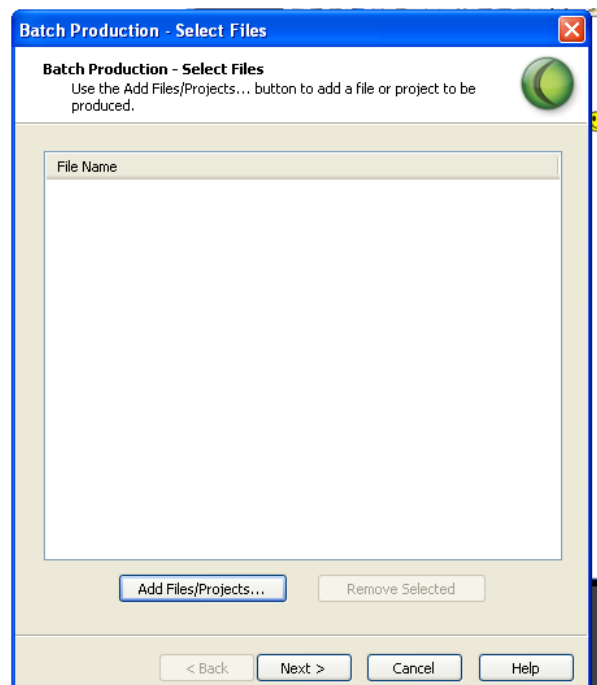
The Center for Instructional Excellence

## BATCH PRODUCE

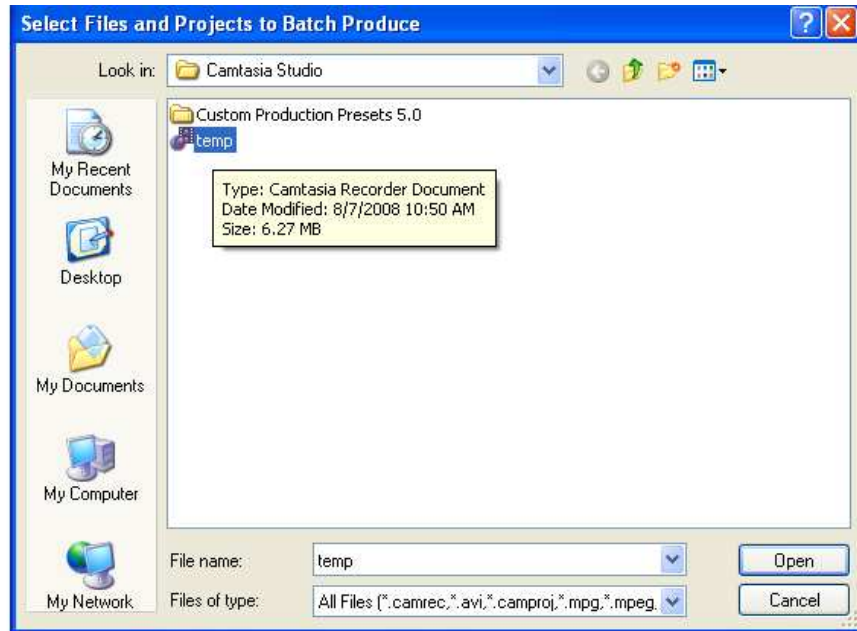
1. After completely recording and saving several projects.
  - a. Note: these must have gone to edit and saved as projects, rather than directly produced.
2. Click <Batch Produce>



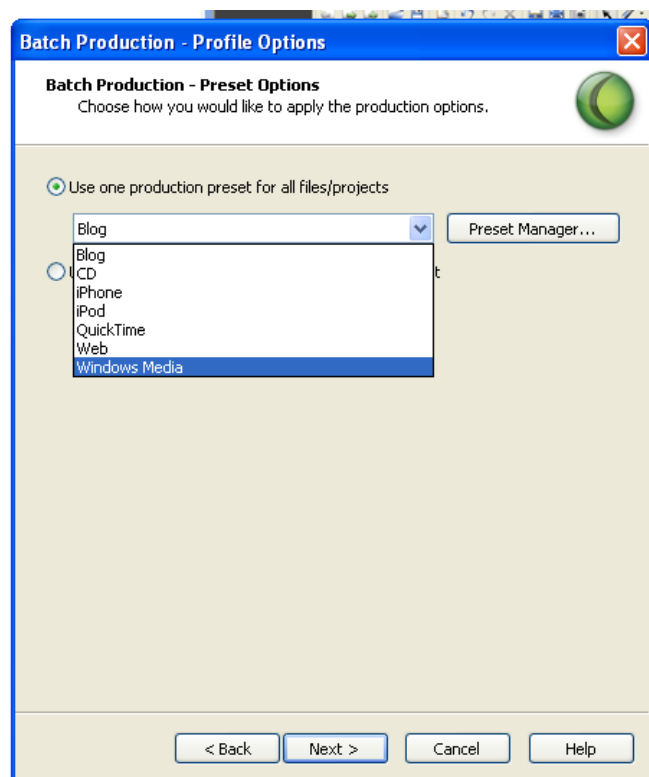
3. Click <Add files Or Projects>
4. Click <Next>



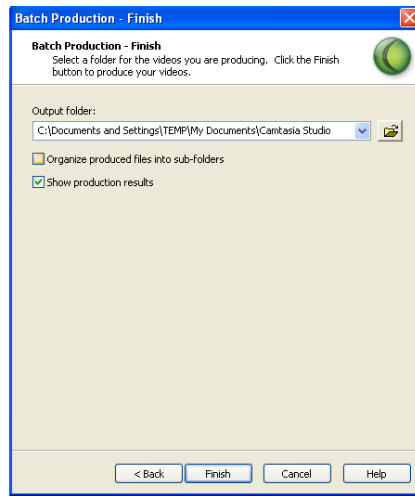
5. All projects (with icons like “temp”) will be listed here
6. Click on desired files
7. Click open
  - a. This can be repeated until done OR use control key to highlight several at once.



8. When Finished adding, Click Next. then
9. Choose Windows Media; Click <Next>



10. Click <Finish>



11. The following appears.

