

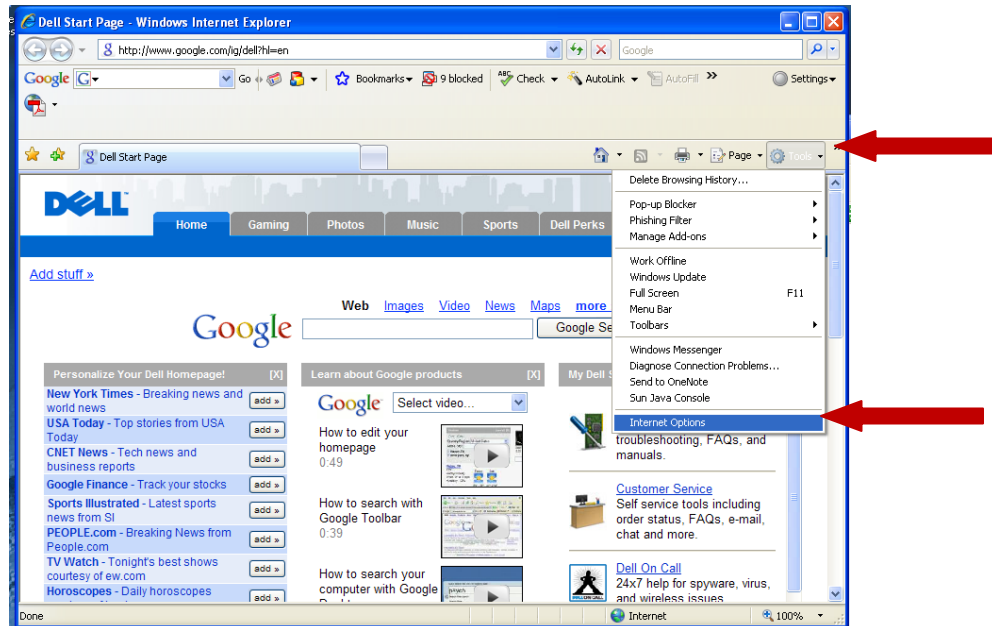


CIE

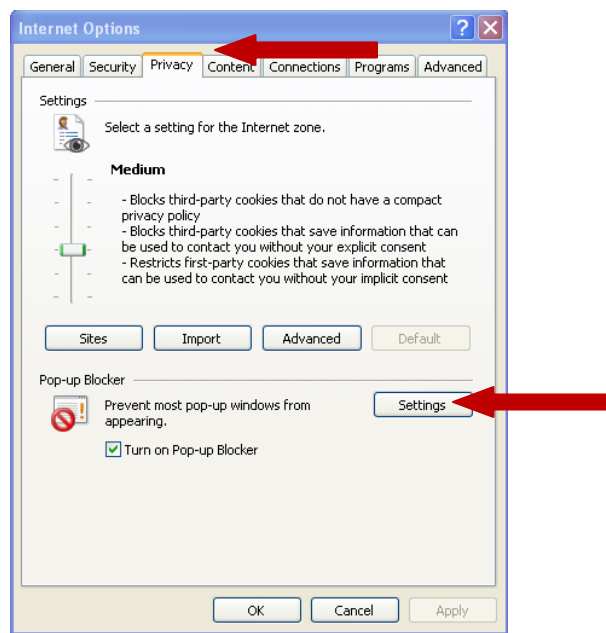
The Center for Instructional Excellence

ALLOW POP-UPS TO WALLACEONLINE

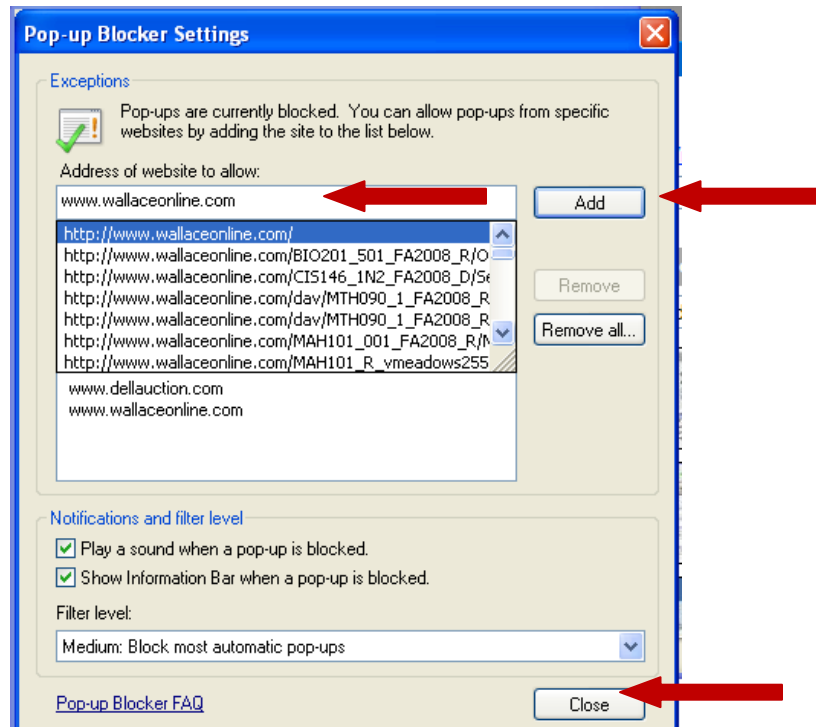
1. Click on <Internet explorer> from desktop or in programs
2. Click <Internet Options> from <Tools> drop menu



3. Click <Privacy> tab
4. Click <Settings>



5. Type www.wallaceonline.com
6. Click <Add>
7. Click <Close>



- If you still are having problems with the pop-ups, check out <http://www.wallace.edu/cie/support/optimizebrowser.php> for more information about turning off other pop-up blockers that could be installed on your computer.