

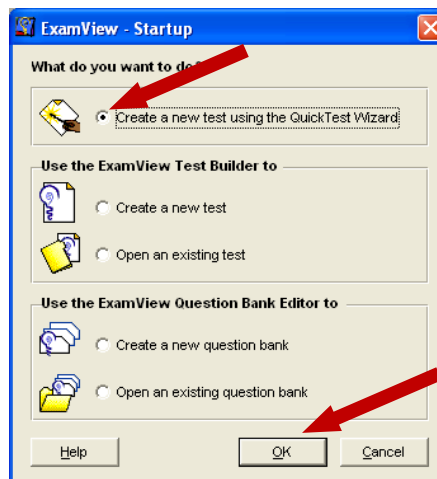


## HOW TO USE QUICK TEST WIZARD IN EXAMVIEW AND EXPORT FOR RESPONDUS

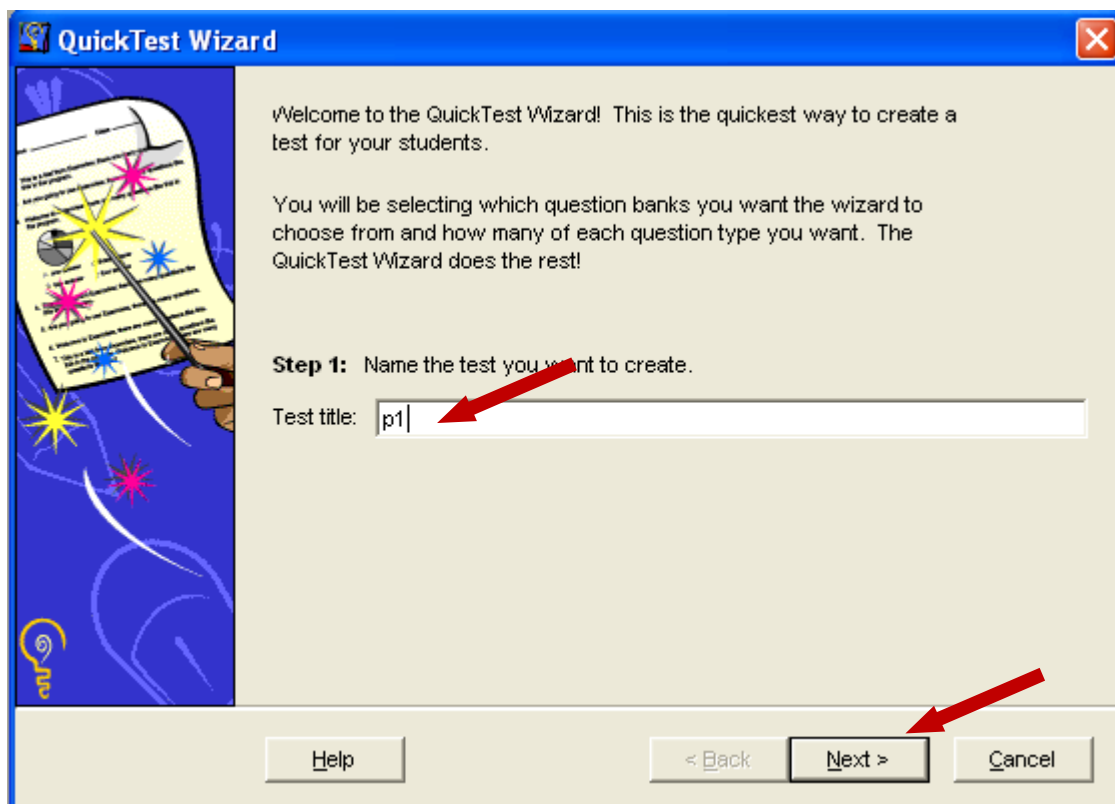
### STEP 1

Create a test in Examview - Open Quick Test Wizard in Examview

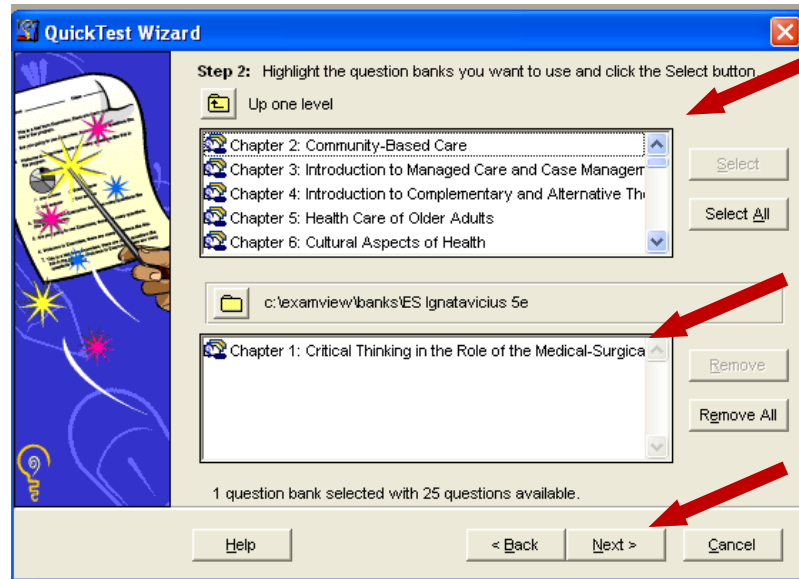
1. From Examview start up menu, choose <Quick Test Wizard>
2. Click <OK>



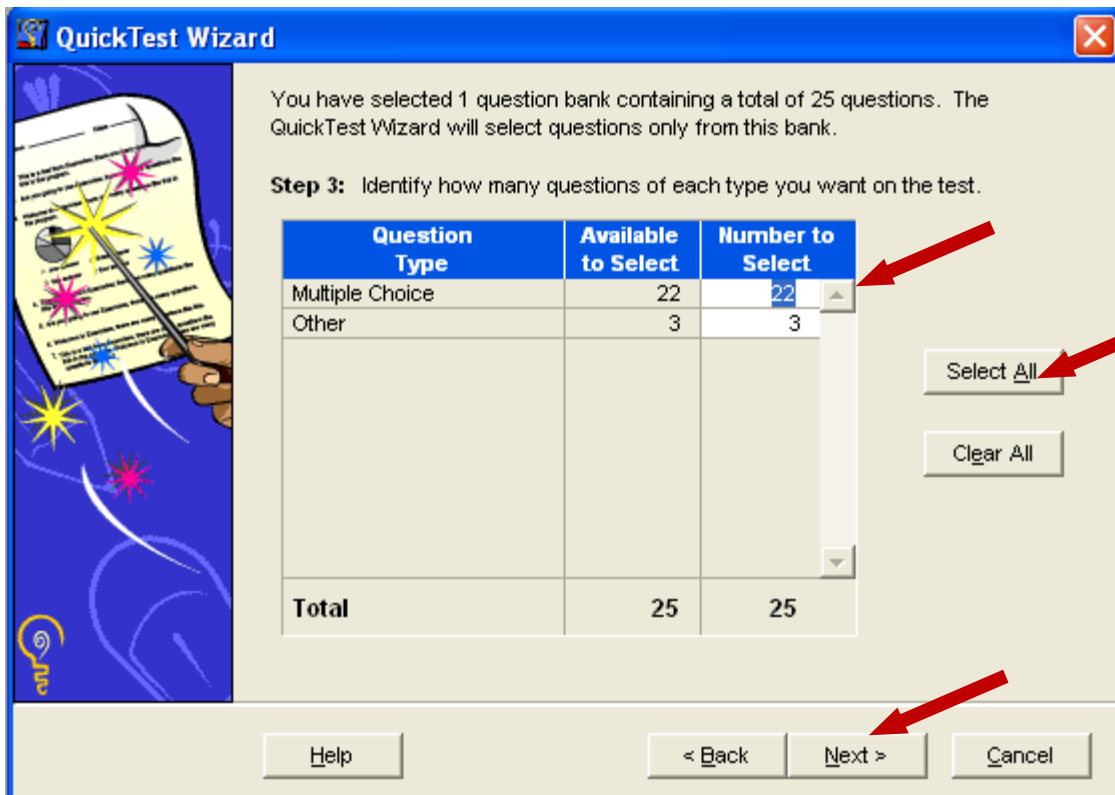
3. Name the test
4. Click <Next>



5. Choose the desired chapters for test
6. Click <select>
7. Click <next>



8. Type desired number of questions or click <select all>
9. Click <next>



10. Test will appear.