



CIE

The Center for Instructional Excellence

HOW TO UPLOAD AN EXAMVIEW GENERATED ZIP FILE TO WEBCT

Step 3

Add questions to Quiz in Web CT

1. To add questions to quiz, go within Designer Mode of WebCt, double click on icon that was created as quiz
2. Click Question Database

homepage

Quizzes/Surveys | **Question Database**

To view additional Quiz, Question and Student Information, click on Submissions, Detail, Reports or Summary.

0 Available | 0 Due soon

Display: All quizzes and surveys | Go | June 27, 2008 5:57pm

practice 1

Availability: Unavailable

Duration: Unlimited | Points: / ---

Results: [Submissions](#) | [Detail](#) | [Reports](#) | [Summary](#)

Actions

↔ indicates a from the main

Options

[Create quiz](#)

[Create survey](#)

[Create label](#)

[↔ Edit](#)

[↔ Delete](#) | [↔ Edit](#)

[Edit titles](#)

3. Click <Import questions from file>

CIE: CIE116 dummy course (CIE116_K_instructor)

Designer Options

Homepage > Q 1 > **Question Database**

Question Database | Quizzes/Surveys

To select a question, check the box to its left. To preview a question, click 🔍. To edit a question, click the question's title.

Category: chapter 1 quiz

There are no questions in this category.

Actions

↔ indicates a selection is required from the main frame.

↔ indicates multiple selections are allowed.

Options: Category

View:

All categories | Go

[Create category](#)

[Edit category titles](#)

Delete:

chapter 1 quiz | Go

Options: Question

Create question:

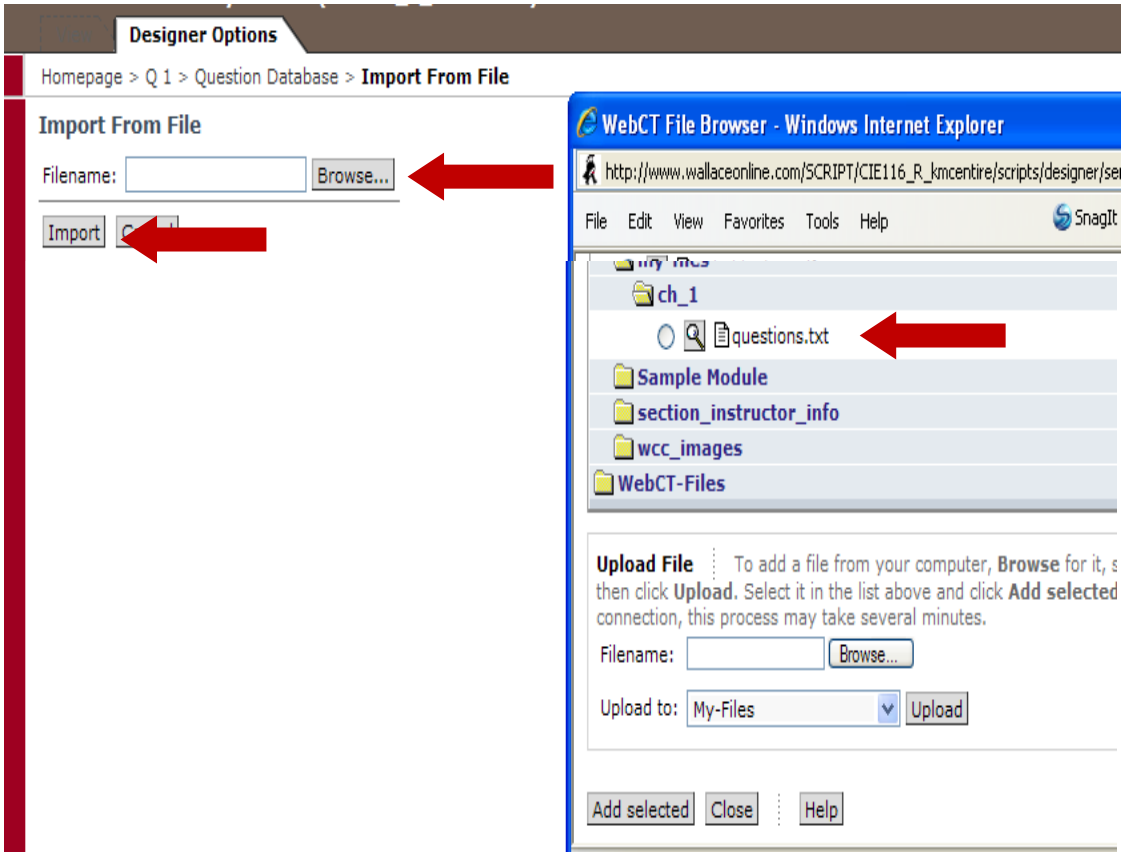
Multiple choice | Go

[↔ Edit question](#)

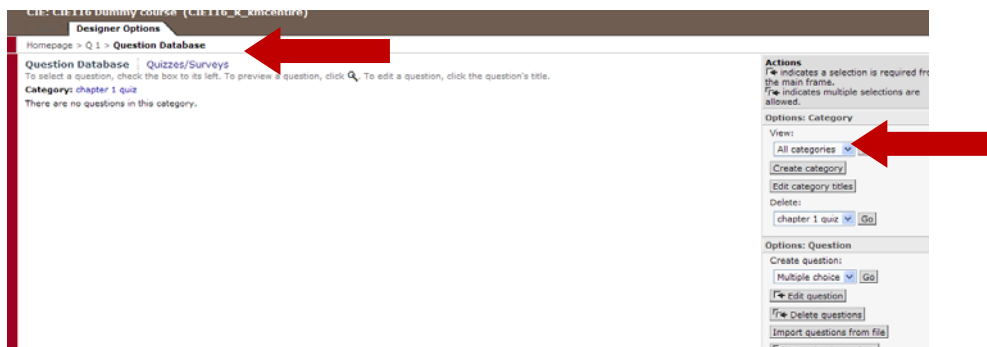
[↔ Delete questions](#)

[Import questions from file](#)

4. Browse for the unzipped txt file
5. Click the bubble for the file and <Add selected>
6. Click <Import>
7. Adding questions from file appears
8. Click <continue> at bottom of page that page



9. In View area on right, Click arrow down and choose newly generated category.
10. Click <Go>
11. Questions will show
12. Go back to Quizzes and Surveys- Click <Quizzes/surveys> at top
13. Click <Create Quiz> at right
14. Name the quiz
15. Click <Create>



16. Radio bubble beside created Quiz

17. Click <edit> at right

Quizzes/Surveys | [Question Database](#)
To view additional Quiz, Question and Student Information, click on Submi

0 Available | 0 Due soon

Display:

←

Availability: **Unavailable**

Duration: **Unlimited** | Points: / ---

Results:

18. Click <add question set>

19. Mark desired questions or folder

20. Click <add selected>

Designer Options

Homepage > Q 1 > Quiz Editor

Quiz Editor: practice 1
Quiz editor

To select a question, check the box to its left. To preview a question, click . To edit a question, click the question's title. To assign points for each question, enter a number in the Points Field next to each question, then click **Update total**.

No questions have been added to the quiz yet.

WebCT Question Browser - Windows Internet Explorer

http://www.wallaceonline.com/SCRIPT/CFE116_B_fmcentire/scripts/designer/serve_quiz.pl?ACTION=BROWSE&SUB_ACTION=BROWSE&ID=3

- chapter 1** ←
- Question MC #1 MC
- Question MC #10 MC
- Question MC #11 MC
- Question MC #12 MC
- Question MC #13 MC
- Question MC #14 MC
- Question MC #15 MC
- Question MC #16 MC
- Question MC #17 MC
- Question MC #18 MC
- Question MC #19 MC

Create Question : To add a new question, select the question type and click **Create**. After creating the question, select it in the list above and click **Add selected**.

Question type:

Select the questions that you would like to add to **practice 1**.

←

Actions

indicates a selection from the main frame.
 indicates multiple allowed.

Options

←

←

Organize

Customize

21. Type in the points per questions in the blank (4 in this case)

22. Type the number of questions using in the other block (all 25 in this case)

23. Click <Update Total>

Homepage > Q 1 > Quiz Editor

To select a question, check the box to its left. To preview a question, click . To edit a question, click the question's title. To assign points for each question, enter a number in the Points Field next to each question, then click **Update total**.

<input type="checkbox"/>	No.	Points	Select	Questions
<input type="checkbox"/>	1	4	25	<input type="checkbox"/> Question MC #1 <input type="checkbox"/> Question MC #10 <input type="checkbox"/> Question MC #11 <input type="checkbox"/> Question MC #12 <input type="checkbox"/> Question MC #13 <input type="checkbox"/> Question MC #14 <input type="checkbox"/> Question MC #15 <input type="checkbox"/> Question MC #16 <input type="checkbox"/> Question MC #17 <input type="checkbox"/> Question MC #18 <input type="checkbox"/> Question MC #19 <input type="checkbox"/> Question MC #20 <input type="checkbox"/> Question MC #21 <input type="checkbox"/> Question MC #22 <input type="checkbox"/> Question MC #23 <input type="checkbox"/> Question MC #24 <input type="checkbox"/> Question OT #25

Total: 0 ←